

Useful websites including those of organisations with careers in clinical research

| | |
|-------------------------------|--|
| ICR Website | www.icr-global.org |
| Data Management: ACDM website | www.acdmglobal.org |
| Regulatory | www.topra.org |
| Statistics | www.psiweb.org |
| Quality Assurance | www.therqa.com |
| Archival and Records | the-hsraa.org |
| PCMG (outsourcing) | www.pcmg.org.uk |
| AHPPI (early phase) | www.ahppi.org |
| NHS | www.hra.nhs.uk |
| MHRA website | www.gov.uk (MHRA) |

Best for Clinical Research News

ABPI: www.abpi.org.uk
Bio Industry news: www.bioindustry.org
BiopharmaDive : www.biopharmadive.com
PharmaTimes: www.pharmatimes.com
FDA news: www.fdanews.com
BBC Health: www.bbc.co.uk/news/health
Fierce Pharma: www.fiercepharma.com

Your Career Path Starts at University

To give you the best head start for your first job in clinical research it's worth investigating the type of degree that employers will be looking for.

On some occasions you may find that employers are looking for a variety of degrees all the way through to a Masters/PhD. This is especially true for statisticians, who usually require a Masters in biostatistics.

Life Science Degree - a degree based on the study of living organisms. This can be on a variety of subjects including Biochemistry, Biological Science & Biomedical Science

Numerical based Degree - a degree such as Mathematics or Computing with some specifics based on life sciences such as statistics or epidemiology options

Health Science Degree- An alternative route would be looking at a degree based on Pharmacy or Nursing.

As well as a proven degree, a diploma or certification in Clinical Research can help to add weight to your application and boost your knowledge of Clinical Research

There are many Employers who offer Internship or Graduate schemes for those who have not yet gained any work experience.

It is common for Employers to recruit directly from Graduate schemes, however, with the experience gained from any of these schemes you may have a higher success rate in future applications.

Alternatively, the ICR provides many training courses, some of which are entry level and provide a certificate in Clinical Research that will be of great benefit when applying for a job. Please do look at our website for more details.



Welcome to The Institute of Clinical Research

Pursuing excellence in Clinical Research

Who are we?

The Institute of Clinical Research (ICR) is the probably the oldest independent membership-led professional body for global clinical researchers.

For over 40 years, The Institute of Clinical Research (ICR) has provided high quality training, networking and support to the clinical research community. For many members the Institute has been part of their life throughout their working careers.

The Institute also provides face to face or online CPD certified training courses throughout the year, where delegates can enjoy the benefits of sharing a highly interactive learning experience with delegates from other organisations and ask our trainers about specific issues.

We have different levels of membership. If you are interested in a career in clinical research, do consider joining as an early career clinical researcher, for just £10 a year. Please look on our website for details or contact us.



The Institute of Clinical Research

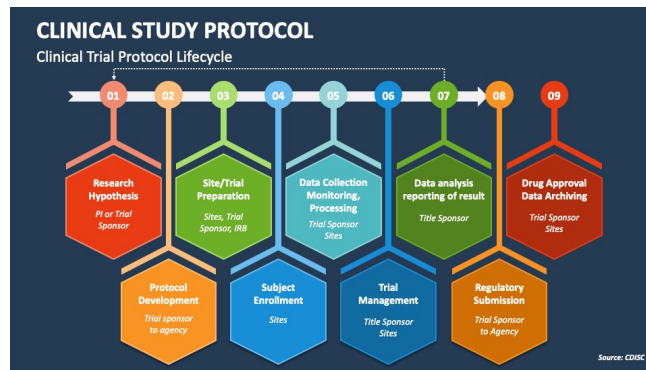


www.icr-global.org

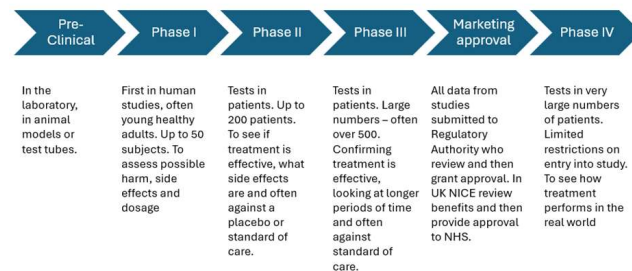
Contact us at office@icr-global.org

What do we mean by Clinical Research?

Clinical Research is a branch of medical research that involves people and aims to determine the safety and effectiveness of medicines, devices, diagnostic products and treatment regimes. These may be used for prevention, treatment, diagnosis or for relieving symptoms of a disease.



The phases of clinical trials



A Career in Clinical Research

Clinical research can make all the difference when it comes to saving peoples' lives, or improving their quality of life. Careers can be in the public (e.g NHS) or private (e.g. Pharmaceutical, Biotechnology, Clinical Research Organisation) sector.

Clinical Trial Administrator (CTA): responsible for administrative aspects of a single country aspect of a clinical trial. A great starting role for those wishing to become a CRA.

Clinical Research Associate (CRA): responsible for monitoring a study site that is taking part in clinical research.

Statistical Programmer: Programmer who uses statistical software to produce tables, listings and figures of data

Clinical Data Co-ordinator/Clinical Data Manager: Responsible for managing all aspects of clinical data collection and dissemination.

Study Start Up Associate: involved in supporting start up activities in clinical studies, collection of essential documents/records. Can be an entry point into a career in regulatory or to becoming a CRA.

Project Management Associate: responsible for administrative aspects of a project with some financial aspects in some cases. A great starting point if you have had some exposure to clinical research or business and are wanting to progress to a project manager.

Study co-ordinator: part of a clinical research team in a hospital or clinical trial site. May have a nursing or life science background.

Clinical Trials pharmacist: qualified pharmacist who oversees the investigational products in clinical studies.

The above roles are only some available, there are many roles to suit your interest from medical writing, to regulator to drug safety to name but a few.

Key Terms & Definitions

ICR - The Institute of Clinical Research

GCP - Good Clinical Practice

GMP - Good Manufacturing Practice

GLP - Good Laboratory Practice

SOP – Standard Operating Procedure - detailed instructions to achieve uniformity of the performance of a specific function

Investigator: Responsible for the conduct of a clinical trial at a clinical site e.g. hospital, clinic, clinical trial unit

Subject/Trial Participant: An individual who participates in a clinical trial either as a recipient of the Investigational Medicinal Product or a control

Sponsor: An individual, company, institution or organisation which takes responsibility for the initiation, management and/or financing of a clinical trial.

Protocol: A document that describes the objective/s, design, methodology, statistical considerations and organisation of the trial.

Investigational Medicinal Product (IMP): A pharmaceutical form of an active substance or placebo being tested or used as a reference in a clinical trial.

RA - Regulatory Authority

CA - Competent Authority (EU Term)

MHRA - The Medicines and Healthcare products Regulatory Agency (UK)

FDA - The Food and Drug Administration

EMA - European Medicines Agency

NICE - National Institute of Clinical Excellence

HRA - Health Research Authority (England)

NIHR - National Institute of Health

EC/IRB - Ethics Committee/Institutional Review Board

DSMB/DMC - Data Safety Monitoring Board/Data Monitoring Committee